



DTS ♦ PROVIDENT

Intelligent Land Use

TRAFFIC CALMING MEASURES, PEDESTRIAN SAFETY FEATURES AND SPEED LIMITS

Presented by Brian Dempsey, P.E., PTOE, RSP1
dtsprovident.com
(914) 428-0010

- Combination of measures used to reduce the negative effects of motor use:
 - Alter driver behavior
 - Improve conditions for non-motorized users
 - Improve safety
- Traffic calming consists of physical designs
 - Vertical deflections
 - Horizontal shifts
 - Road Narrowing
 - Block Access
- Can be implemented at an intersection, street, or neighborhood

WHAT IS TRAFFIC CALMING

- Reduce speed of vehicular movements.
- Improve safety for non-motorized users including pedestrians and bicyclists
- Decrease crash severity
- Targeted Investment
- Enhance Quality of Life

PURPOSES OF TRAFFIC CALMING AND PEDESTRIAN SAFETY COUNTERMEASURES

Vertical Deflections

- Speed Humps
- Speed Tables/Raised Crosswalks
- Raised Intersections
- Changing Service Texture

Horizontal Deflections

- Chicanes/Lateral Shift
- Curb Extensions / Bulb-Out
- Roundabouts / Mini-Roundabouts / Traffic Circles

Road Narrowing

- Narrowing Lanes
- Chokers
- Road Diets
- Realigned Intersection
- On-Street Parking

Block Access

- Median Diverters
- Cul-de-sacs/Dead Ends
- Closing of Streets
- One-way Conversion

TRAFFIC CALMING MEASURES

DTS ♦ PROVIDENT

Intelligent Land Use



SIGNAGE AND STRIPING

DTS ♦ PROVIDENT

Intelligent Land Use

Revision of lane use or widths to result in one travel lane per direction with minimum practical width with the goal of reducing the cross-section.



ROAD DIET

DTS ♦ PROVIDENT

Intelligent Land Use

BEFORE



AFTER



ROAD DIET

Rounded raised areas that are often used in series to alternate driver behavior.

Speed humps are typically 3-4 inches high and 12-14 feet long.

Speed bumps are 3-6 inches high and 1-3 feet long and not permitted on public streets.



SPEED HUMPS/ BUMPS/ CUSHIONS

DTS ♦ PROVIDENT

Intelligent Land Use



ROUNDAABOUT

DTS ♦ PROVIDENT

Intelligent Land Use



ROUNDBOUT

DTS ♦ PROVIDENT

Intelligent Land Use



ROUNABOUT

DTS ♦ PROVIDENT

Intelligent Land Use



RADAR SPEED SIGN

DTS ♦ PROVIDENT

Intelligent Land Use



FLASHING BEACON

DTS • PROVIDENT

Intelligent Land Use



The Rye YMCA is Pleased to Invite You
to the Opening Reception for **HEADS UP!**

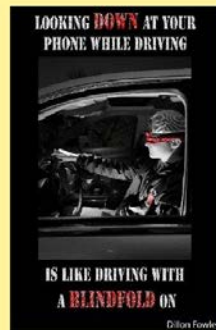
The Rye High School Distracted Walking & Driving Poster Contest Exhibit

Heads Up! Poster Contest Sponsored by Joe Lamberti, Rye Brook Service Center

WED, JANUARY 22, 2020
THE RYE ARTS CENTER

5:30 PM – 7:00 PM
51 MILTON ROAD

RSVP to denisewoodin@ryeymca.org. Light refreshments will be served and prizes awarded!



Special thanks to: The Rye Arts Center, RHS Art Teacher Nichole Chiffriller and the contest judges.



The Rye YMCA is Pleased to Invite You
to the Opening Reception for **HEADS UP!**

The Rye High School Distracted Walking & Driving Poster Contest Exhibit

Heads Up! Poster Contest Sponsored by Joe Lamberti, Rye Brook Service Center

TUES, JANUARY 22, 2019
THE RYE ARTS CENTER

5:30 PM – 7:00 PM
51 MILTON ROAD

RSVP to denisewoodin@ryeymca.org
Light refreshments will be served



Special thanks to: The Rye Arts Center, RHS Art Teacher Nichole Chiffriller and the contest judges.

GETTING STUDENTS INVOLVED

dtsprovident.com

What are the legal issues that may arise with the implementation of traffic calming measures?

- Vehicle damage
- Pedestrian tripping
- Bicycle incident

LEGAL ISSUES

- Stop signs are not to be utilized to control speed as per the Manual on Uniform Traffic Control Devices (MUTCD)
- It is important to note that if you limit traffic in one location, it will show up in another so you must consider the impacts to other locations
- Impacts on drainage
- Right-of-way

OTHER ISSUES

What are some of the issues that you may hear from the general public about the installation of Traffic Calming Measures?

- Clearance issues/bottoming out on Speed Humps and Speed Tables
- Snow Plowing concerns
- Impacts to bicyclists
- Impacts on drainage
- Noise
- Emergency Vehicle delays
- “Makes me travel out of my way”
- “Makes me have to travel too slow”

PUBLIC ISSUES

- Rectangular Rapid Flashing Beacons (RRFBs)
- Leading Pedestrian Intervals (LPIs)
- Crosswalk Visibility Enhancements
- Raised Crosswalks
- Pedestrian Crossing/Refuge Islands
- Pedestrian Hybrid Beacons (PHBs)
- Road Diets

PEDESTRIAN SAFETY COUNTERMEASURES

DTS ♦ PROVIDENT

Intelligent Land Use



PARKING ON CROSSWALK – RAISED INTERSECTION

Lateral horizontal extensions, resulting in a narrower roadway section that are located at the intersection.



CURB EXTENSIONS/ BUMPOUTS

DTS ♦ PROVIDENT

Intelligent Land Use



RAISED CROSSWALK - SIGNAGE

DTS ♦ PROVIDENT

Intelligent Land Use



RAISED INTERSECTION AND CURB EXTENSIONS/ BUMPOUTS

dtsprovident.com

DTS ♦ PROVIDENT

Intelligent Land Use



RAISED INTERSECTION

DTS ♦ PROVIDENT

Intelligent Land Use



CROSSWALK VISIBILITY

DTS ♦ PROVIDENT

Intelligent Land Use



RAISED CROSSWALK

(914) 428-0010

dtsprovident.com

DTS ♦ PROVIDENT

Intelligent Land Use



CROSSWALK REFLECTORS

DTS ♦ PROVIDENT

Intelligent Land Use



PROTECTIVE PEDESTRIAN ISLAND

DTS ♦ PROVIDENT

Intelligent Land Use



RECTANGULAR RAPID FLASHING BEACONS (RRFBs)

DTS ♦ PROVIDENT

Intelligent Land Use



RECTANGULAR RAPID FLASHING BEACONS (RRFBs)

DTS ♦ PROVIDENT

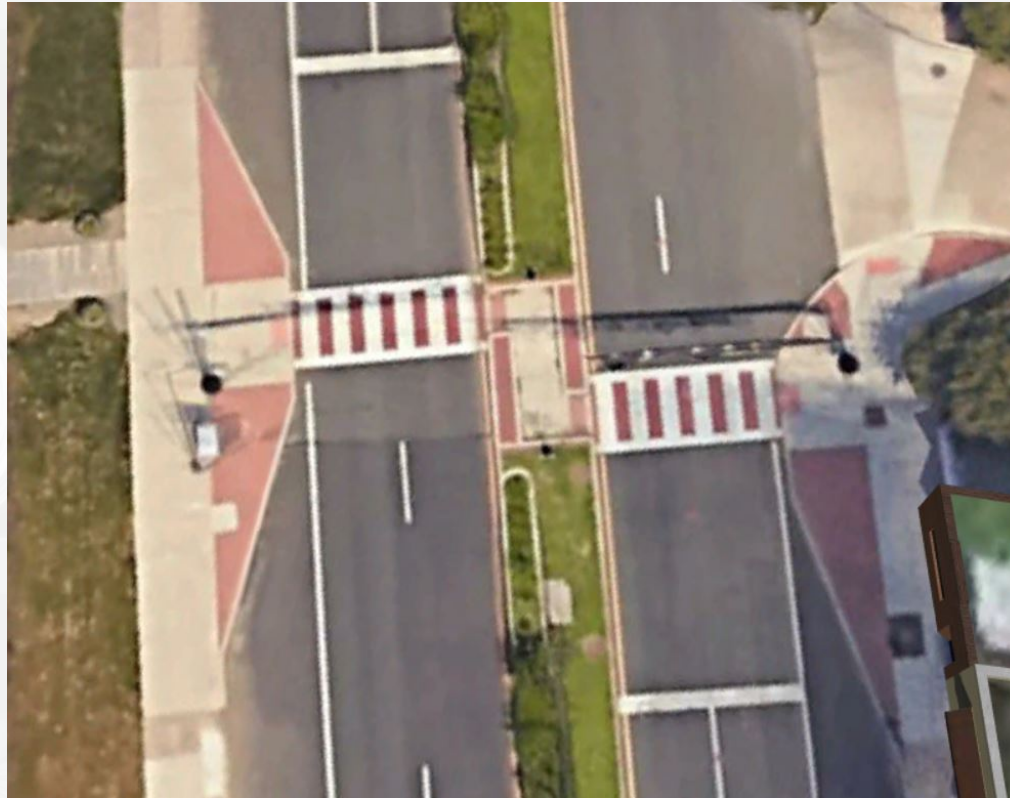
Intelligent Land Use



PEDESTRIAN HYBRID BEACON (PHB) – HAWK SIGNAL

DTS ♦ PROVIDENT

Intelligent Land Use



PEDESTRIAN HYBRID BEACON WITH PEDESTRIAN ISLAND

dtsprovident.com

- At signalized intersections
- Allows pedestrians to walk before vehicles get a green signal to turn
- Usually 3-4 seconds
- Increases visibility, reduces conflicts, and improves yielding



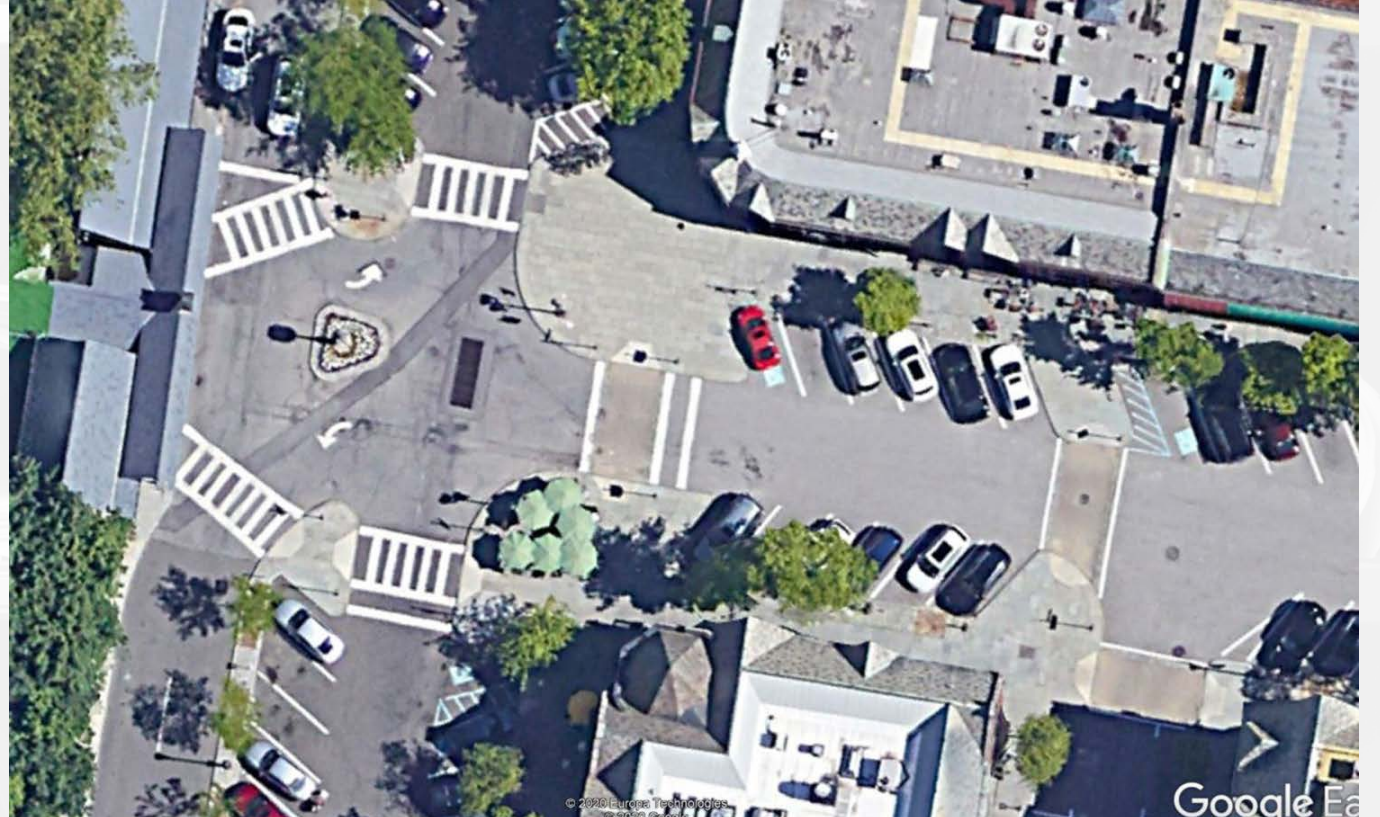
LEADING PEDESTRIAN INTERVALS (LPIs)



ADA REQUIREMENTS

DTS ♦ PROVIDENT

Intelligent Land Use



COMBINATION OF MEASURES

DTS ♦ PROVIDENT

Intelligent Land Use



ONE WAY BENEFITS, CURB EXTENSIONS, COLORED CROSSWALK

- Lead Bicycle Signals
- Sharrows
- Bike Lanes
- Bike Paths



BICYCLE SAFETY MEASURES

DTS ♦ PROVIDENT

Intelligent Land Use



SHARROWS

DTS ♦ PROVIDENT

Intelligent Land Use



BIKE PATHS/MULTI-USE PATHS

DTS ♦ PROVIDENT

Intelligent Land Use



COMPLETE STREETS

dtsprovident.com

DTS ♦ PROVIDENT

Intelligent Land Use



SIGNAL PRE-EMPTION

dtsprovident.com

DTS ♦ PROVIDENT

Intelligent Land Use



ELECTRIC VEHICLES

DTS ♦ PROVIDENT

Intelligent Land Use



ADA ELECTRIC VEHICLE CHARGING STATIONS

DTS ♦ PROVIDENT

Intelligent Land Use



PARKING GENERATION RATES, UBER IMPACTS AND SHARED PARKING



NEW SPEED LIMIT LAW

THANK YOU!

Brian Dempsey, P.E., PTOE, RSP1
bdempsey@dtsprovident.com

QUESTIONS